



Identifying existing problems at an early stage by combining data and knowledge.

OUR JOINT AMBITION: PARENTS AND CHILDREN DESERVE THE BEST CHANCES AT A GOOD FUTURE

IT IS POSSIBLE THAT WE HAVE BEEN AWARE OF PROBLEMS FOR MUCH LONGER, BUT WE DO NOT ANTICIPATE THEM.

CHILDREN AND FAMILIES ARE NOT, OUT OF THE BLUE, CONFRONTED WITH HUGE PROBLEMS. OVER TIME THERE HAVE BEEN OPPORTUNITIES TO DO BETTER

WHY IS THIS NECESSARY?



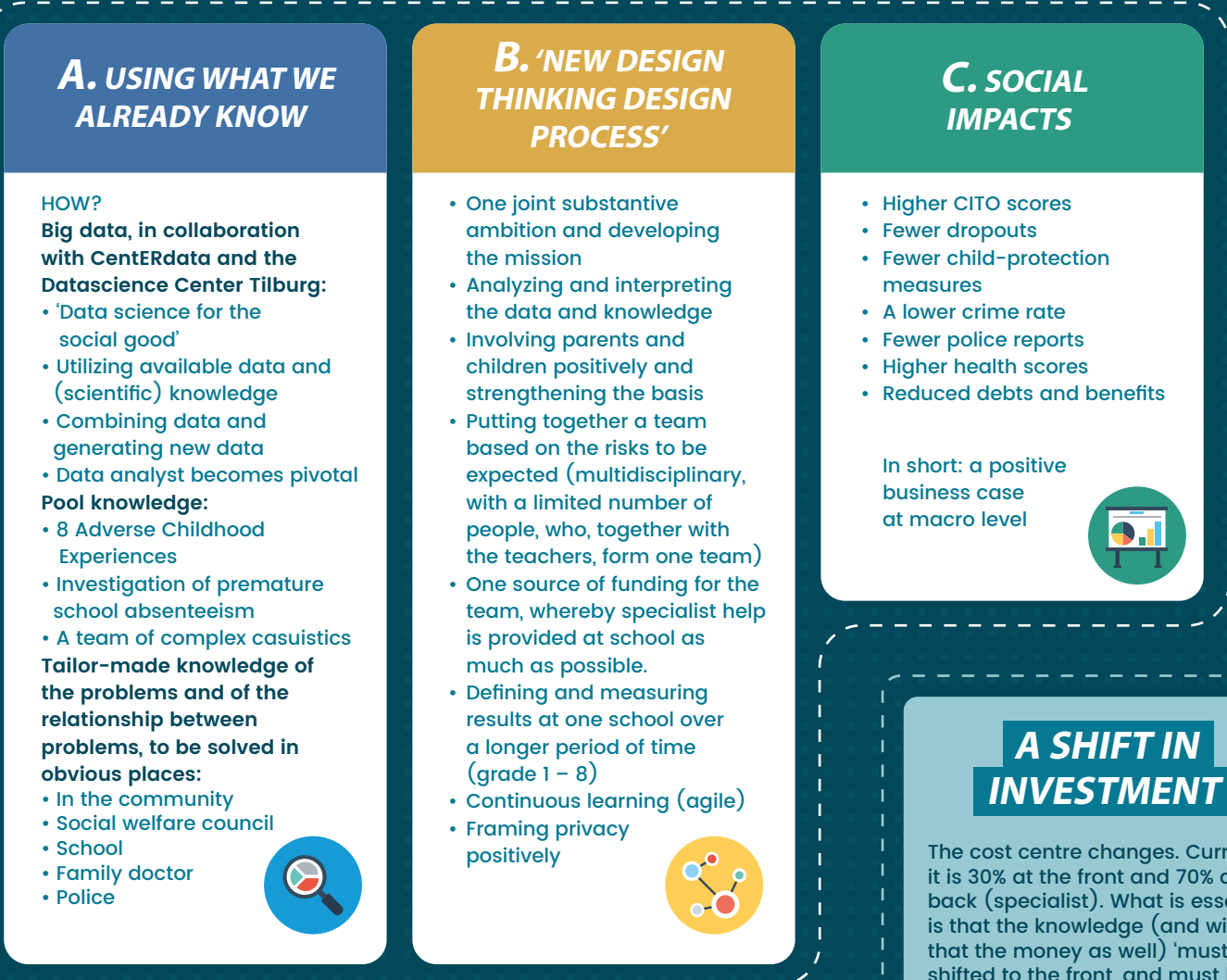
- 1: Preventing sorrow and misery
- 2: Breaking through generational problems
- 3: Rising costs and falling budgets
- 4: A scarcity of healthcare professionals
- 5: Effectiveness: "Stop wasting time and effort"

CORE STRATEGY



- a. Using available data and knowledge
- b. A new 'design thinking' design process
- c. Long-term effect measurement

WE MUST RESPECT PRIVACY, BUT IT MUST NOT BECOME AN OBSTACLE.



A. USING WHAT WE ALREADY KNOW

HOW?
Big data, in collaboration with CentERdata and the Datascience Center Tilburg:


- 'Data science for the social good'
- Utilizing available data and (scientific) knowledge
- Combining data and generating new data
- Data analyst becomes pivotal

Pool knowledge:

- 8 Adverse Childhood Experiences
- Investigation of premature school absenteeism
- A team of complex casuistics


Tailor-made knowledge of the problems and of the relationship between problems, to be solved in obvious places:

- In the community
- Social welfare council
- School
- Family doctor
- Police



B. 'NEW DESIGN THINKING DESIGN PROCESS'


- One joint substantive ambition and developing the mission
- Analyzing and interpreting the data and knowledge
- Involving parents and children positively and strengthening the basis
- Putting together a team based on the risks to be expected (multidisciplinary, with a limited number of people, who, together with the teachers, form one team)
- One source of funding for the team, whereby specialist help is provided at school as much as possible.
- Defining and measuring results at one school over a longer period of time (grade 1 – 8)
- Continuous learning (agile)
- Framing privacy positively



C. SOCIAL IMPACTS


- Higher CITO scores
- Fewer dropouts
- Fewer child-protection measures
- A lower crime rate
- Fewer police reports
- Higher health scores
- Reduced debts and benefits

In short: a positive business case at macro level



A SHIFT IN INVESTMENT

The cost centre changes. Currently it is 30% at the front and 70% at the back (specialist). What is essential is that the knowledge (and with that the money as well) 'must' be shifted to the front, and must be deployed there. What is crucial is that knowledge must be shifted to the front, not that less first-line and second-line knowledge is required.



IF I'M AFRAID TO SEE IT, BECAUSE I DON'T KNOW WHAT TO DO, I DON'T SEE IT, IT'S NOT THERE - COGNITIVE DISSONANCE.